



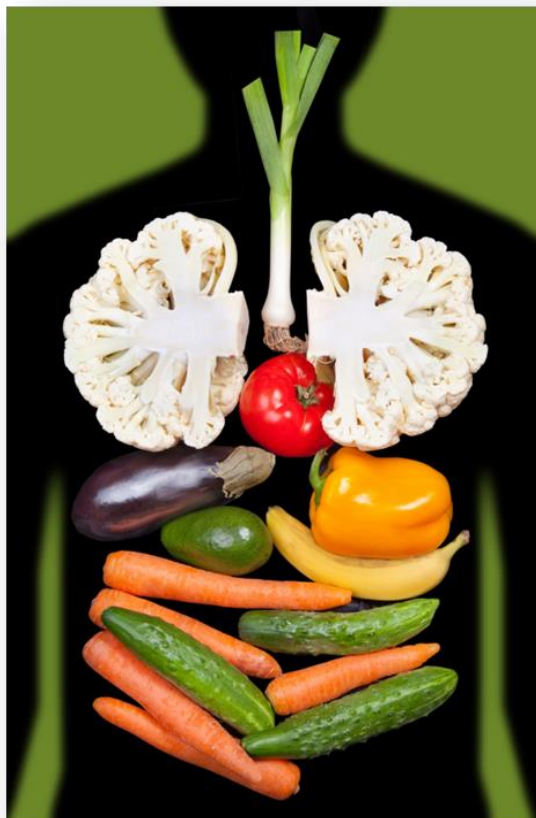
HERTFORDSHIRE COUNTY COUNCIL
FAIRLANDS PRIMARY SCHOOL & NURSERY

**Pound Avenue
Stevenage
Hertfordshire
SG1 3JA**

Headteacher: Mr Robert Staples BA (Hons)
Assistant Headteachers: Mrs Hayley Yendell, Miss Emily Thompson, Mr Jamie Brewis, Miss Michelle Bridge & Miss Emma Verlander

Tel: (01438) 351053 Fax: (01438) 750116 E-mail: admin@fairlands.herts.sch.uk www.fairlands.herts.sch.uk

Healthy Humans



Year 2

Autumn Term 1 2015

Over the next few weeks, your child will be working on the topic 'Healthy Humans'

They will be taking part in a series of exciting activities, including:

- **Finding out about the basic needs of humans in order to survive**
- **Exercising to keep us healthy**
- **Learning about how to eat the right amount and the right types of foods in order to keep us healthy**
- **Designing and making healthy snacks**
- **Finding out what we need to do to keep us clean**

**Your child needs your help and involvement!
Please get involved by:**

- **Talking about what is healthy and what is not at meal times**
- **Discussing hygiene and what we can do to keep clean and healthy**
- **Exercising together and telling us all about it, with photographs etc.**
- **Cooking together**
- **Get books out of the library to find out how our bodies work by reading them and discussing them together**

Sit down with your child and help them record what they know about the topics, BEFORE and then AFTER they have learnt about it at school.

What does your child know about the topic 'Healthy Humans' topic?

Before the Topic...

After the Topic...

What else is happening?

Religious Education

This half-term, your child will be learning about signs and symbols.

Values Education

Each month we will focus on a new value which we will develop and encourage in all areas of school life. Please support your child and encourage them to show their values at home. Please let us know if they do! Our next values will be 'Responsibility' in September and 'Tolerance' in October.

Homework

Please support your child by making sure that they read on a DAILY basis. Spellings and other homework are sent home on Fridays and due in by Wednesdays.

Clubs

Breakfast Club	Every morning 7.45 – 8.50am
Tree House After School Club	Every day 3.15 – 6.15pm
Skills 7 Football	Mondays 3.20 – 5.00pm
Family Learning	Mondays 9.00 – 10.00am
Credit Union – Dining Room	Tuesdays 3.15pm
Lower Building Games Library & Shared Reading	Fridays 8.50 – 9.10am

Forthcoming Events

Wednesday 2nd September	INSET Day
Thursday 3rd September	Start of Autumn Term 1
Monday 5th October	Harvest Festival Assembly
Thursday 15th October	School Photographer
Monday 26th to Friday 30th October	October Half Term
Monday 2nd November	Start of Autumn Term 2
Wednesday 2nd September	INSET Day